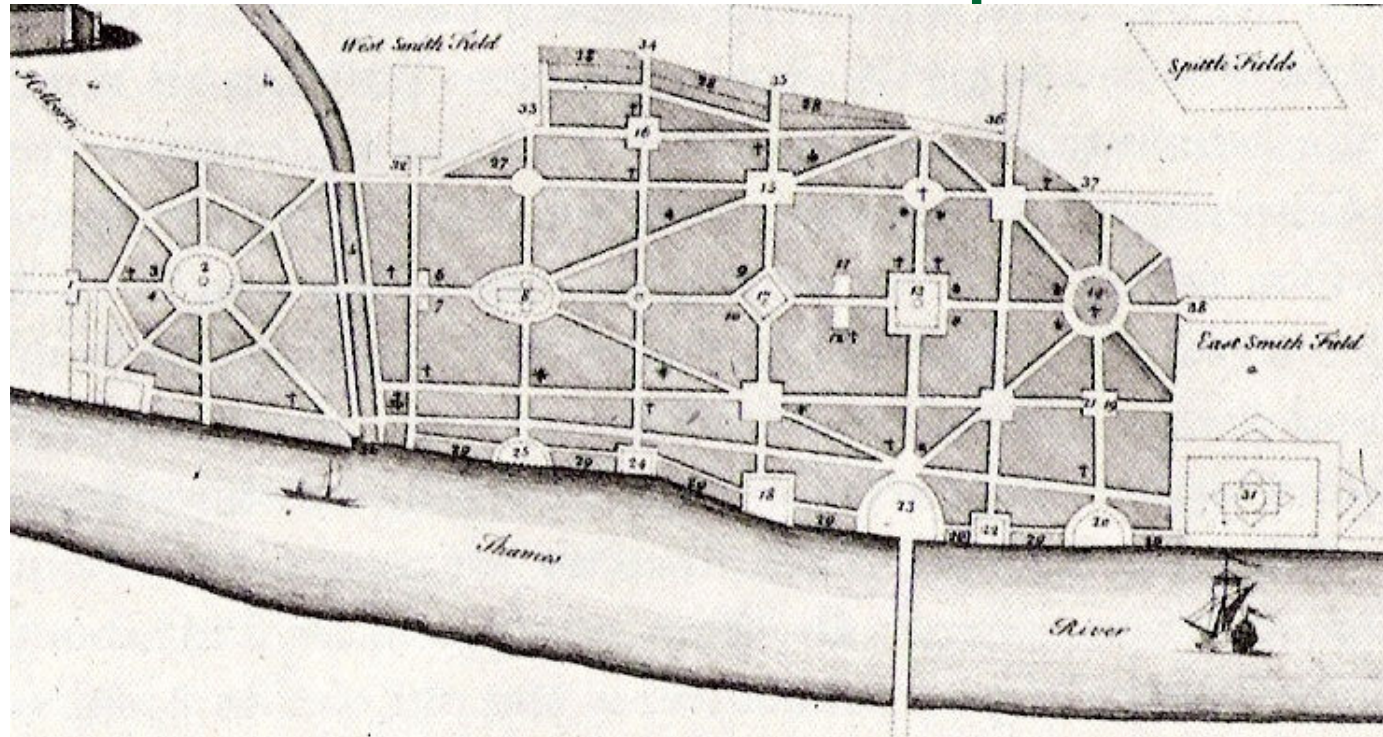

South Area Study

The trouble with master-plans

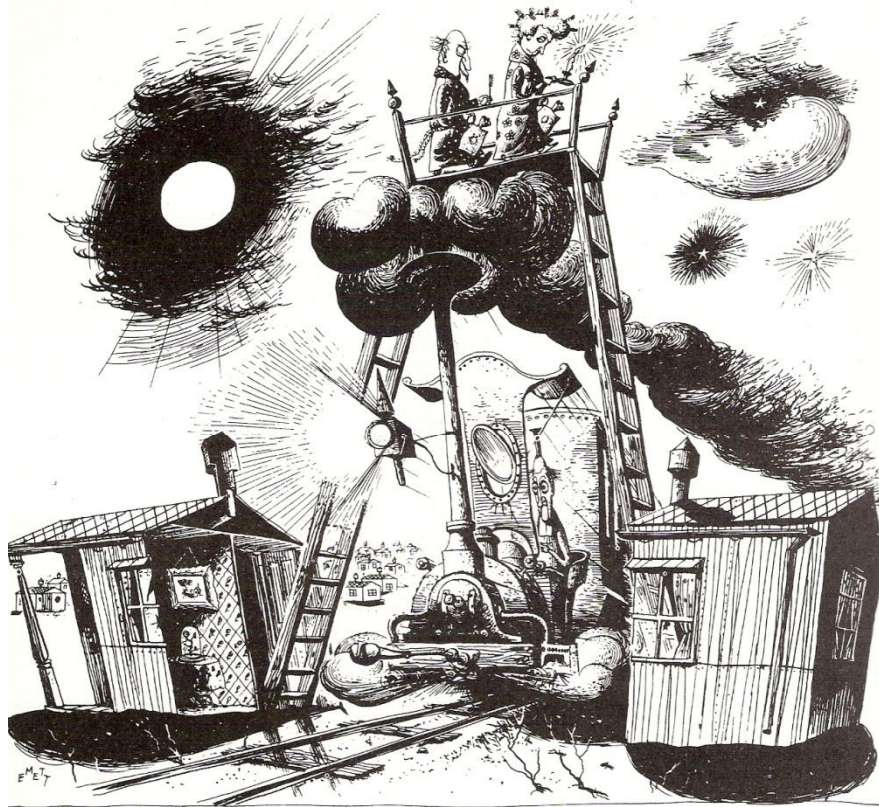


Evelyn's plan for the re-building of London after the Great Fire

This sort of planning needs cash, land ownership and dictatorial powers

South Area Study

The extent and scope of the study



“... but I do wish the Housing Committee and the Railway Extension people could have co-ordinated their plans!”

Three sources of evidence:

1. Community Consultations

2. Public & Private Sector Consultations

3. First Principles Analysis

Outcomes:

1. Suggestions for general strategies

2. Suggestions for specific locations

South Area Study

Neighbourhoods Community Consultations:

Environment:

- Parking
- Litter
- Dog fouling
- Neglected landscape



South Area Study

Neighbourhoods Community Consultations:

Open & accessible:

- More for the young
- More & better shops
- More convenient health centre
- Traffic



South Area Study

Neighbourhoods Community Consultations:

Safer & Stronger Communities:

- Anti-social behaviour (graffiti & vandalism)
- Garage blocks
- Street crime
- More for the elderly



South Area Study

Neighbourhoods Community Consultations:

Growth:

- More jobs
- More affordable homes
- New leisure complex
- More bungalows for the elderly



South Area Study

Public & Private organisations - Consultations:

- Democracy (3)
- Conservation (1)
- Archaeology (2)
- Sustainability (3)
- Transport (6)
- Geology (1)
- Strategy (4)
- Retail & Commercial (7)
- Education (2)
- Religion (3)
- Community & Sports (8)
- Civic Society (1)
- Housing (2)
- Planning (2)
- Police (1)
- Fire & Rescue (1)
- Health (1)

Numbers refer to the number of organisations consulted

South Area Study

First principles analysis - Geology



South Area Study

First principles analysis - History



South Area Study

Neighbourhoods Community Consultations:

Environment:

- Parking
- Litter
- Dog fouling
- Neglected landscape



South Area Study – Neighbourhood theme

- Environment: Parking



Parking pressure in urban centres

South Area Study – Neighbourhood theme Environment: Parking



Congestion and inadequate parking on Fletton High Street

South Area Study – Neighbourhood theme

- Environment: Parking



Match-day parking on Whittlesey Road (urban clearway designation)

South Area Study – Neighbourhood theme

- Environment: Parking



Inadequate parking provision – Fletton Avenue

Pressure on parking caused by sub-division of houses and multiple occupation

South Area Study – Neighbourhood theme

- Environment: Parking



Parking restrictions – gardens and biodiversity gone – cars cross the footpath causing damage & danger - traffic speeds rise



No parking restrictions – gardens and biodiversity retained – footpath free from crossing cars - traffic speeds reduced

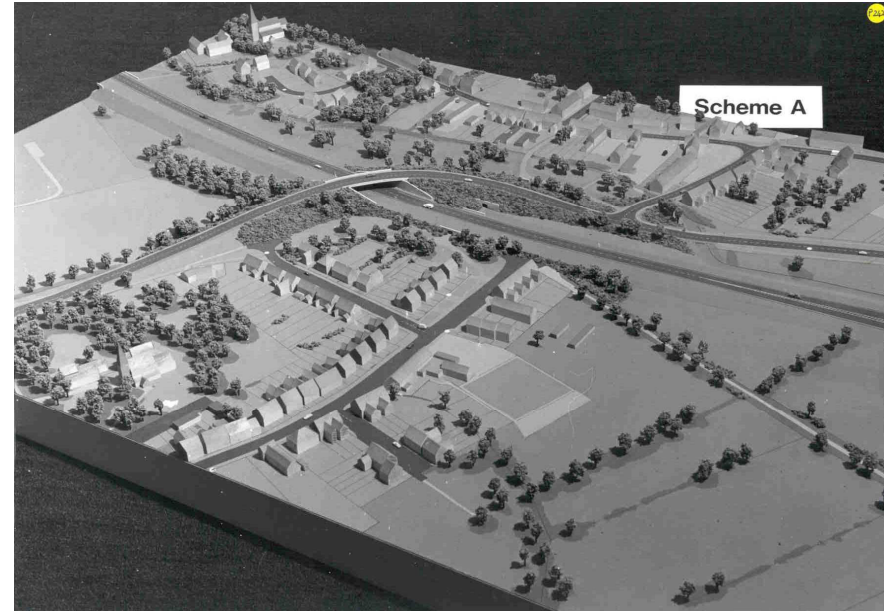
Unintended consequences of on-road parking restrictions

South Area Study – Neighbourhood theme

Environment: Neglected landscape



The green – dissected by three roads



It could have been worse! (development corporation scheme A)

“Green deserts” – anonymous expanses of unusable verge

South Area Study – Neighbourhood theme

Neglected landscape



Unsupervised public space

South Area Study – Neighbourhood theme

Neglected landscape



Fletton Spring



East Meon copyright Colin Smith

Making the most of the natural landscape assets

South Area Study – Neighbourhood theme

Neglected landscape



Green space does not have to be a football pitch – it could be a community orchard and grass does not have to be mown – it could be eaten.

South Area Study – Neighbourhood theme

Neglected landscape



Industrial landscapes do not have to be boring ones

South Area Study

Neighbourhoods Community Consultations:

Open & accessible:

- More for the young
- More & better shops
- More convenient health centre
- Traffic



South Area Study –Neighbourhood theme

Open & Accessible: The young, shops & traffic



The Nene Back-river at Stanground sluice



Potter Heigham copyright Shorebase

Potential for more youth activity, commercial activity and cycling along the river

South Area Study –Neighbourhood theme

Open & Accessible: The young, shops & traffic



Pipistrelle Pavilion
Copyright John Simpson

- Lively nightlife
- Alternative culture
- Green Backyard
- Cheap property
- Tourist attractions
- Near City centre

could Woodston be
Peterborough's
Bohemian quarter?



Waterloo East

South Area Study –Neighbourhood theme

Open & Accessible: The young, shops & traffic



*Spare track - London Rd –
Nene Park*



*The post-industrial landscape – disused track-beds,
Woodston*

Potential for new cycle and footpath routes

South Area Study –Neighbourhood theme

Open & Accessible: The young, shops & traffic



One of four large under-used recreation spaces on the north bank of the river



Woodston Wharf (foreground) and abutments to 1901 footbridge and sluice (background)

Potential links to under-used recreational resources

South Area Study

Neighbourhoods Community Consultations:

Safer & Stronger Communities:

- Anti-social behaviour (graffiti & vandalism)
- Garage blocks
- Street crime
- More for the elderly



South Area Study – Neighbourhood theme

Safer and stronger communities - ASB, Graffiti, Vandalism, Street crime



Disused toilet block & changing rooms, Fletton Rec

Potential to support community policing passive supervision

South Area Study – Neighbourhood theme

Safer and stronger communities - ASB, Graffiti, Vandalism, Street crime



“SLOAP”- space left over after planning



Lack of “defensible space”

Potential for design improvements to prevent ASB

South Area Study

Neighbourhoods Community Consultations:

Growth:

- More jobs
- More affordable homes
- New leisure complex
- More bungalows for the elderly



South Area Study – Neighbourhood theme

Growth - Jobs, homes & Leisure

Lost Industries:

Bricks

Gravel extraction

Sugar refining

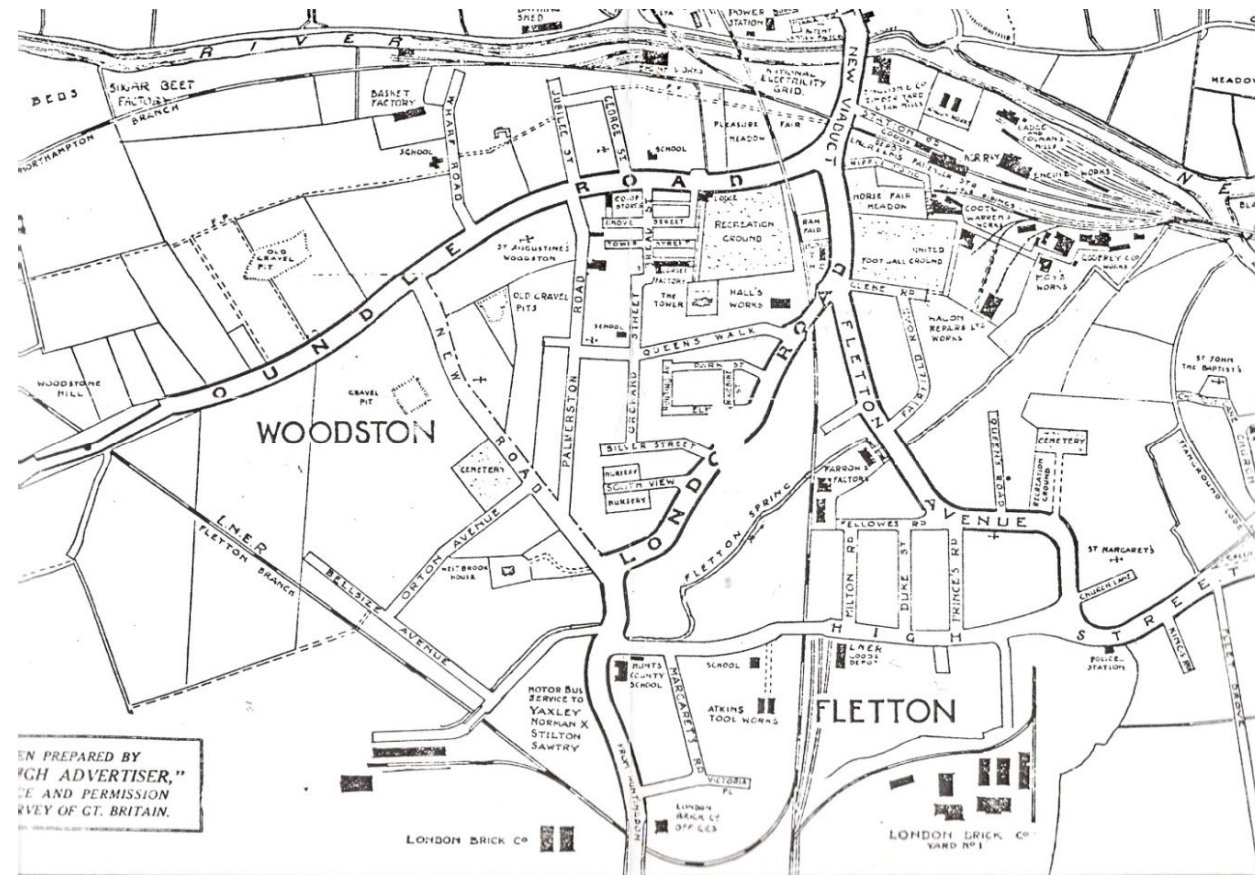
Canning

Basket making

Flour milling

Timber milling

Market gardening



1930's bus map showing employment areas

South Area Study – Neighbourhood theme

Growth - Jobs, homes & Leisure



Stanground's traditional role in boat building and maintenance survives

South Area Study – Neighbourhood theme

Growth - Jobs, homes & Leisure



Woodston's traditional connection with railways survives

South Area Study – Neighbourhood theme

Growth - Jobs, homes & Leisure



Potential for new employment

South Area Study – Neighbourhood theme

Growth - Jobs, homes & Leisure



New housing in Huntingdon

Identify the type and number of homes are needed

South Area Study – Neighbourhood theme

Growth - Jobs, homes & Leisure

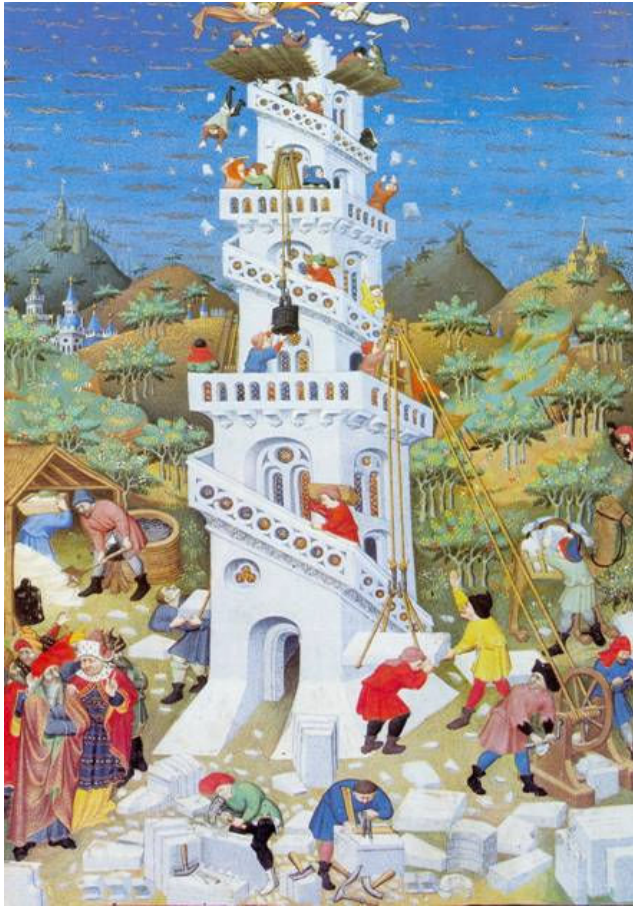


Potential environmental improvements to mature homes

South Area Study – Party!

- Woodston Fun Day / Woodston Weekend
 - St. Anthony Celebrations
 - Stanground Feast
 - Fletton Feast?
 - Stanground River Day?
 - Woodston Steam Day?
 - Green Backyard Day?
-

South Area Study – Delivery Funding and management



- Under the leadership of Neighbourhood Management, the delivery sub-groups would be composed of the interested parties and professionals appropriate to the particular project as identified in the recommendations

